

**ARL8A Antibody (Center)**  
**Affinity Purified Rabbit Polyclonal Antibody (Pab)**  
**Catalog # AP10162C****Specification**

---

**ARL8A Antibody (Center) - Product Information**

Application	FC, IHC-P, WB,E
Primary Accession	<a href="#">O96BM9</a>
Other Accession	<a href="#">O5ZKQ8</a> , <a href="#">NP_620150.1</a>
Reactivity	Human, Mouse
Predicted	Chicken
Host	Rabbit
Clonality	Polyclonal
Isotype	Rabbit IgG
Calculated MW	21416
Antigen Region	116-142

**ARL8A Antibody (Center) - Additional Information****Gene ID** 127829**Other Names**

ADP-ribosylation factor-like protein 8A, ADP-ribosylation factor-like protein 10B, Novel small G protein indispensable for equal chromosome segregation 2, ARL8A, ARL10B, GIE2

**Target/Specificity**

This ARL8A antibody is generated from rabbits immunized with a KLH conjugated synthetic peptide between 116-142 amino acids from the Central region of human ARL8A.

**Dilution**

FC~~1:10~50

IHC-P~~1:50~100

WB~~1:1000

E~~Use at an assay dependent concentration.

**Format**

Purified polyclonal antibody supplied in PBS with 0.09% (W/V) sodium azide. This antibody is purified through a protein A column, followed by peptide affinity purification.

**Storage**

Maintain refrigerated at 2-8°C for up to 2 weeks. For long term storage store at -20°C in small aliquots to prevent freeze-thaw cycles.

**Precautions**

ARL8A Antibody (Center) is for research use only and not for use in diagnostic or therapeutic procedures.

**ARL8A Antibody (Center) - Protein Information**

**Name** ARL8A

**Synonyms** ARL10B, GIE2

**Function** Plays a role in lysosome motility (By similarity). In neurons, mediates the anterograde axonal long-range transport of presynaptic lysosome-related vesicles required for presynaptic biogenesis and synaptic function (By similarity). May play a role in chromosome segregation (By similarity).

**Cellular Location**

Late endosome membrane {ECO:0000250|UniProtKB:Q9NVJ2}. Lysosome membrane {ECO:0000250|UniProtKB:Q9CQW2}. Cytoplasm, cytoskeleton, spindle {ECO:0000250|UniProtKB:Q9NVJ2}. Cell projection, axon {ECO:0000250|UniProtKB:Q9CQW2}. Synapse {ECO:0000250|UniProtKB:Q9CQW2} Note=Localizes with microtubules at the spindle mid-zone during mitosis. {ECO:0000250|UniProtKB:Q9NVJ2}

**Tissue Location**

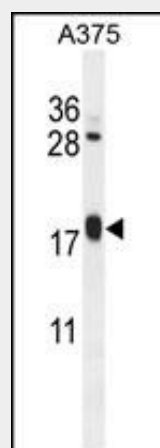
Ubiquitously expressed.

**ARL8A Antibody (Center) - Protocols**

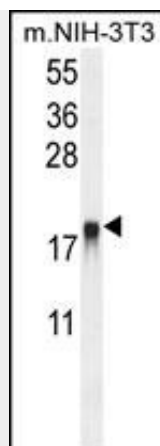
Provided below are standard protocols that you may find useful for product applications.

- [Western Blot](#)
- [Blocking Peptides](#)
- [Dot Blot](#)
- [Immunohistochemistry](#)
- [Immunofluorescence](#)
- [Immunoprecipitation](#)
- [Flow Cytometry](#)
- [Cell Culture](#)

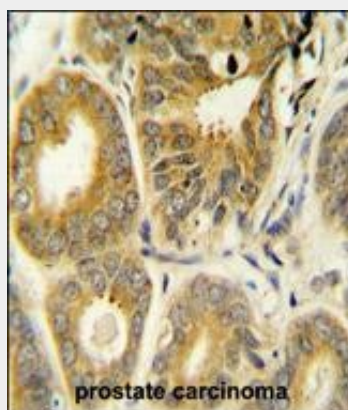
**ARL8A Antibody (Center) - Images**



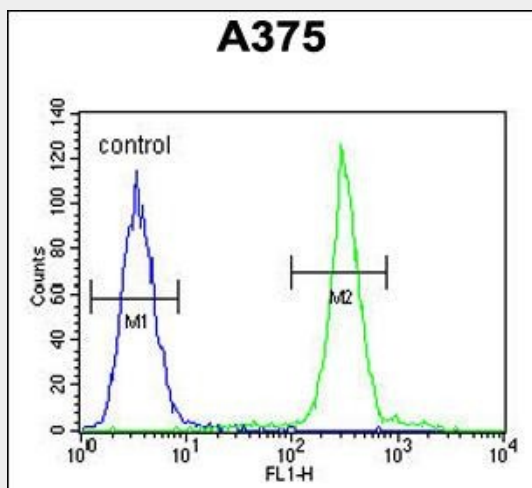
ARL8A Antibody (Center) (Cat. #AP10162c) western blot analysis in A375 cell line lysates (35ug/lane). This demonstrates the ARL8A antibody detected the ARL8A protein (arrow).



ARL8A Antibody (Center) (Cat. #AP10162c) western blot analysis in mouse NIH-3T3 cell line lysates (35ug/lane). This demonstrates the ARL8A antibody detected the ARL8A protein (arrow).



ARL8A Antibody (Center) (Cat. #AP10162c) immunohistochemistry analysis in formalin fixed and paraffin embedded human prostate carcinoma followed by peroxidase conjugation of the secondary antibody and DAB staining. This data demonstrates the use of the ARL8A Antibody (Center) for immunohistochemistry. Clinical relevance has not been evaluated.



ARL8A Antibody (Center) (Cat. #AP10162c) flow cytometric analysis of A375 cells (right histogram) compared to a negative control cell (left histogram). FITC-conjugated goat-anti-rabbit secondary antibodies were used for the analysis.

#### ARL8A Antibody (Center) - References

Lamesch, P., et al. Genomics 89(3):307-315(2007)  
Hofmann, I., et al. J. Cell. Sci. 119 (PT 8), 1494-1503 (2006) :  
Okai, T., et al. J. Cell. Sci. 117 (PT 20), 4705-4715 (2004) :  
Secombe, J., et al. J. Biol. Chem. 279(17):17126-17133(2004)